

Over the years, many families in the extended FCS community contributed their time, money and expertise to help the school grow. Dozens of parents donated hours of love and labor, and made significant financial donations whatever their means, to build the school into the exceptional learning, teaching and parent community it is today.

The success of the **Green and Growing Campaign for FCS** depends on contributions from every FCS family, much as the facilities and programs we enjoy today were funded through the contributions of the families who came before us.

Your family and the other current families will be the first to reap the benefits of the campaign: spaces that give teachers and students the place to explore and collaborate in ways that are limited now – full dramatic and musical performances, broader science curricula in lower school, full art studio, additional middle school classrooms, lockers, and expanded tutoring, administrative, and storage spaces.

How can you make a significant difference to the **Green and Growing Campaign for FCS**?

- By making FCS the highest priority in your family’s charitable giving;
- By making a pledge early in the campaign so that FCS can finalize the project budget; and
- By recognizing the power of your gift to generate matching funds, **doubling the value of your gift** to the school.

FCS must raise \$420,000 in contributions which, along with the matching funds of \$250,000 and the \$730,000 already raised, will cover the \$1.4 million project cost. The chart below shows the number of gifts of each size needed to meet the Green and Growing Campaign goal:

Gift Amount	Number of Gifts Needed	Total	Value of gift w/ matching funds*
\$100,000	1	\$100,000	\$200,000
\$50,000	2	\$100,000	\$200,000
\$25,000	3	\$75,000	\$150,000
\$10,000	5	\$50,000	\$100,000
\$5,000	20	\$100,000	\$100,000
\$1,000	many		

\* Matching gift funds are currently capped at a total of \$250,000.

Pledges can be paid immediately in the 2011 tax year or spread over up to 18 months, potentially in three tax years. The standard pledge schedule is in 6 month increments:

by Dec 31, 2011; by Jun 30, 2012; by Dec 31, 2012 (or early Jan 2013)

For the expansion to be completed by December 2012, construction must begin by June 2012. This means that the majority of the funding must be received by June 2012, in time to fund the construction contract.

That said, a monthly or quarterly payment schedule can often yield a substantially larger gift to the school than a single/one-time gift.

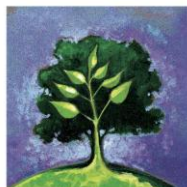
Quarterly Gift	Yield over one year	Yield over 18 months	Value of gift w/ matching funds*
\$4,000	\$16,000	\$24,000	\$48,000
\$2,000	\$8,000	\$12,000	\$24,000
\$600	\$2,400	\$3,600	\$7,200
\$150	\$600	\$900	\$1,800

\* Matching gift funds are currently capped at a total of \$250,000.

FCS accepts gifts of cash, stock and other securities, real estate, and other real assets. Automatic withdrawals, credit card charges, and other methods of payment can be arranged. The Advancement office can provide the details for all payment methods.

For simplicity and efficiency, we have folded the Annual Giving Fund, which supports the yearly operations of the school, into the **Green and Growing Campaign for FCS**. The pledge form provides the option for you to divide your contribution between capital and operating expenses, or not, or to allow the school to make the determination.

Thank you for your support of FCS and all our lifelong learners, courageous risk-takers and joyous peacemakers! You can and do make a difference in the lives of your children and the school.



**Green and Growing Campaign for FCS**

Friends Community School  
5901 Westchester Park Drive  
College Park, MD 20740  
301-441-2100  
[www.friendscommunityschool.org](http://www.friendscommunityschool.org)  
[advancement@friendscommunityschool.org](mailto:advancement@friendscommunityschool.org)